

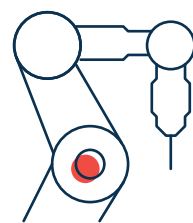
# WHY K-12 INSTITUTIONS CHOOSE ARUBA

Flexible modes of instruction, increasing IoT and personal use devices, access to educational resources, campus safety initiatives and securing personally identifiable information (PII) are driving digital transformation in K-12 education.



**70%**

of schools will fortify their cybersecurity and data encryption defenses<sup>1</sup>

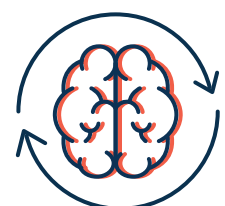


**20%**

of K-12 institutions will leverage AI and robotic process automation (RPA) to automate various campus tasks that drive efficient administration and operations by 2025<sup>1</sup>

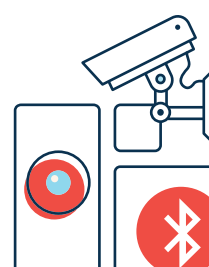


## THE NETWORK CAN HELP!



**45%**

of educational organizations mentioned the use of AI and ML data to monitor and coach pupils<sup>2</sup>



**49%**

of education IT decision makers cited the use of IoT and location-aware solutions to improve campus safety<sup>2</sup>



## Aruba's Customers Speak Out

### FASTER & LESS EXPENSIVE



Within 90 minutes, the Pearland IT was able to isolate the subnet hit by the malware, find the machine that let it in and deliver the system to the IT team, a process that took other school districts six weeks to accomplish.



Aruba's Wi-Fi 6 innovations enabled us to retain our existing AP density model, which provided considerable savings in cabling and other costs, while realizing up to a 300% increase in wireless network capacity.



Mobility Conductor's automated load balancing, combined with Live Upgrades, enabled moving our controllers from our old 1GbE connection to 10GbE during a school day, without any downtime. This not only saved us from working after hours but reduced the migration duration by about half.



"Previously, updating network configurations required taking Wi-Fi offline for several hours as our old system was overly complicated to administer. Using Central, making needed changes takes seconds."

**GARY CLOER**, Network Administrator

### BETTER PERFORMANCE & SERVICES



"Previously, an incident required us to remove the hard drive from a bus's onboard camera and physically take it to a laptop or other computer loaded with the security system's proprietary software. Using our new Wi-Fi, the onboard video will automatically upload to the cloud, where our administrators can access it from anywhere."

**Roman Gaddis**, Executive Director of Technology



Besides supporting 1 iPad for every student, the network also supports more than 80 CCTV cameras, more than 90 VoIP phones and several network photocopiers. Long term, there is the option to add security controls and environmental monitoring. With much of the network activity now automated this creates more time for value-add projects.



"We've had full classrooms, 25 students all streaming Zoom and all working off Chromebooks. The junior school has enabled BYOD. We're fully using a range of SaaS applications. If there have been issues, none has been to do with the network infrastructure."

**NIK CRAGG**, Head of IT

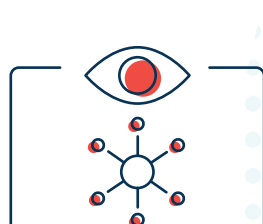


"Prior to implementing Aruba, teachers reported sporadic wireless connectivity. With Aruba and Central as a one-stop location for troubleshooting and correcting issues, we've reduced our teacher downtime from four or five hours to a few minutes."

**KEITH PRICE**, Director of Technology

## The Network Solution for Today's K-12 Ed Challenges

Join other primary and secondary schools around the globe who are using Aruba ESP (Edge Services Platform) to drive innovative learning and secure networks. Empower your network to go beyond connect and protect and support evolving campus demands!



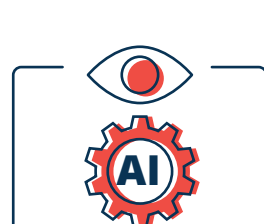
### Aruba Unified Infrastructure

Unify administrative buildings, dorms, research facilities, arenas, data center, and home connectivity with converged management of wired, wireless, and WAN networks onto a single cloud-native platform.



### Edge-to-Cloud Security

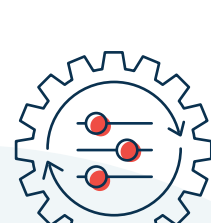
Deploy IoT and other technologies with zero trust confidence, ensuring your student data, instructor data, administrator data, and device traffic stay segmented.



### Aruba AI Ops

Stay ahead of issues and student complaints by leveraging big data and machine learning. Automate IT operational processes such as troubleshooting, root cause determination, and network optimization efforts.

## ESP Use Cases



**Deploy devices across distributed campuses faster**



**Ensure always-on connected users and IoT devices**



**Enable seamless and remote connectivity for hybrid instruction**



**Improve experiences and operations with location insights and analytics**



**Optimize secure access to student records, resources, and data**

## Learn more about Aruba K-12 solutions and how to get started

**LEARN MORE NOW**